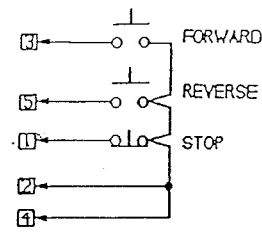
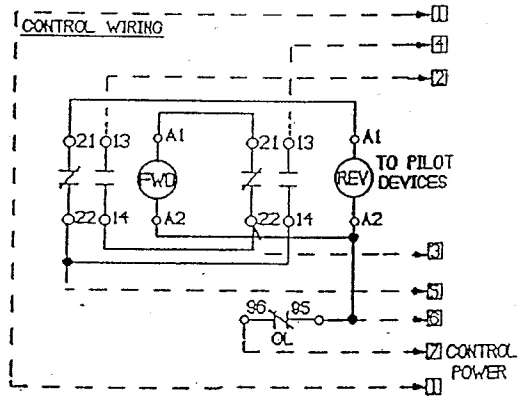
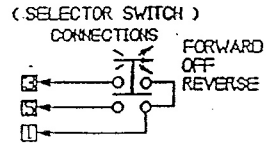
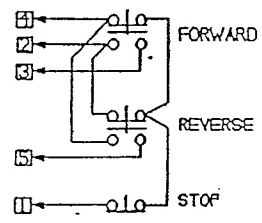


(STANDARD CONNECTION)
DEPRESS "STOP" BETWEEN
FORWARD AND REVERSE
SWITCHING

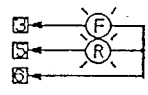


(OPTIONAL CONNECTION)
SWITCHING "FORWARD" AND "REVERSE"
WITHOUT USING "STOP"

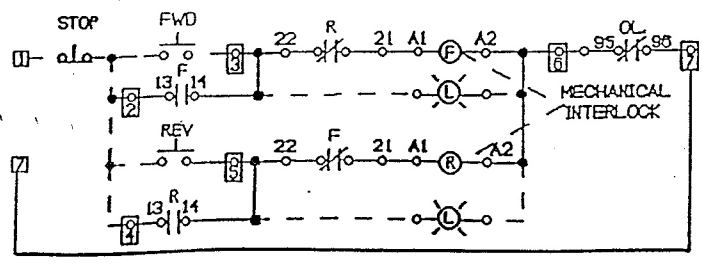
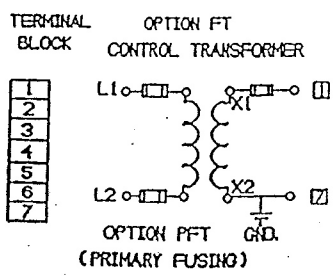


- (A) FOR LINE VOLTAGE CONTROL, CONNECT 1 TO L1, 7 TO L2.
- (B) FOR SEPARATE CONTROL, CONNECT 1 AND 7 TO CONTROL VOLTAGE.
- (C) FOR CONTROL TRANSFORMER, CONNECT AS FOR OPTION (FT).

(PILOT LIGHT CONNECTIONS)



ELEMENTARY DIAGRAM



DESCRIPTION	DATE	APP'D	DRAWN Ted G	Description	E E C CONTROLS 3881 Danbury Road Brewster, NY 10509 (845) 278-5777 (845) 278-5444 FAX
			CHECKED Bo D.	Reversing Starter 3 Phase	
			APPROVED		
			DATE 1/4/98		
Drawing No.					REV.
WD-RXLS					