

## MBS32 / MBS63 AEG MOTOR CIRCUIT PROTECTORS

### MULTIPLE UL APPLICATIONS

1. Replaces the up to 50 kA Circuit Breaker or fuses in a combination starter. The overload relay is replaced.
2. Replaces through the door interlocking power disconnects in panels, variable speed drives or Motor Control Machine panels.
3. Group Installations *per NEC 430-53.*
4. Manual Motor Starter

### Description

AEG MBS32 / MBS63 Series Motor Circuit Controllers offer a complete line of compact, reliable and easy to install Protection Solutions. The MBS Controllers are 100% factory calibrated for precise adjustable current ranges from (0.1 - 63 Amps) in two frame sizes. Both frame sizes, MBS32 and 63 also include magnetic short circuit protection.

### Rating

The MBS32 is available in the current range of 0.1 - 32 Amps with compact 1<sup>3/4</sup>" (45mm) width and the MBS63, with the current range of 6.3 - 63Amps, has 2<sup>1/8</sup>" (55mm) width. For application versatility & users preference, the "MBS32" version is designed with two operator options. *(Shown below left)*

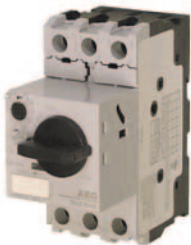
### Accessories

The unique design of MBS32/MBS63 Motor Circuit Controllers have many common accessories that work with both MBS32 & MBS63 models. This reduces the need for additional inventory and saves additional costs. **The accessories include:**

- **Front & Side Mount Auxiliaries**  
*(Flexibility to meet space requirement)*
- **Alarm Contacts**  
*(Short circuit w/reset indicator aux/alarm & overload alarm)*
- **Shunt Trip**  
*(For remote trip requirements)*
- **Undervoltage Trip**  
*(For safety measures, no dangerous restarts when power comes back on)*



The "MBS32 SG" -  
(Rocker lever design)  
With a "standard" interruption  
capacity of 22kA @ 480V.



The "MBS32 HG" -  
(Rotary lever design)  
With a "high" interruption capacity  
of 50kA @ 480V.



Combination  
with contactor  
Type 2  
Coordination

### General Applications

- Manual Motor Controller
- Combination Controller *(self protected)*
- Group Installed Controller

### Specific Additional Applications

- Type 2 Coordination - IEC / EN60947-4-1
- Disconnects
- Main Switch
- Circuit Breaker *(IEC 947-2)*