

SERIES GSA POWER SUPPLY (Three Phase) 24 VOLT DC OUTPUT

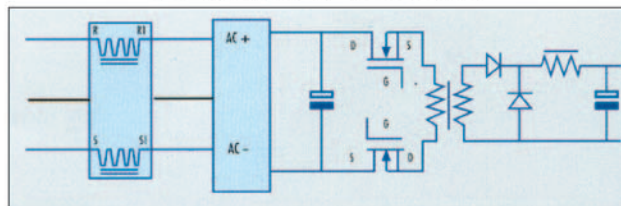
DIN RAIL MOUNT (10 & 20 Amp Only)
COMPACT SIZE
REGULATED OUTPUT



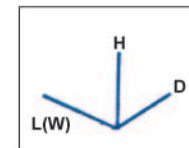
FEATURES		CE
Three phase input 480 Volt, 3Ø		
SPECIFICATIONS		
Input Voltage	360 - 500 VAC ± 15%	
Frequency	47 - 63 Hz	
Output voltage	Select: 24 VDC	
Output voltage adj.	+/- 10%	
Min. Efficiency	90%	
Temperature rating	0°C + 60°C	
Protection Type	Short circuit Autorecovery, Overcurrent	
Safety Specification	EN60950	
EMC Specification	EN55011 Class B EN50082	
Transformer Isolation	3,750 VAC 1 MIN	
Connection	Removable Terminal Blocks	

Selection Catalog Number	GSA TOP 10 D 00 2260	GSA TOP 20 D 00 2270	GSA TOP 30 D 00 2275	GSA TOP 40 D 00 2280	GSA TOP 50 D 00 2285
Output Voltage	24VDC	24VDC	24VDC	24VDC	24VDC
Output Current	10 A	20 A	30 A	40 A	50 A
Noise in mV	100mV	100mV	100mV	100mV	100mV
Mounting	Din Rail	Din Rail	Panel	Panel	Panel
List Each	\$460.00	\$466.00	\$643.00	\$730.00	\$780.00
Dimensions approx. mm (Inch)	L D H 230 140 85 (9.0") (5.5") (3.3")	L D H 230 140 135 (9.0") (5.5") (5.3")	L D H 294 181 175 (11.6") (7.1") (6.9")	L D H 294 181 175 (11.6") (7.1") (6.9")	L D H 294 181 175 (11.6") (7.1") (6.9")

SWITCH MODE ELECTRIC SCHEMATIC



480 VAC 3Ø TO 24 VDC



Dimensions
Approx.