



Fusible /Non Fusible Combination Controls Heavy Duty Series

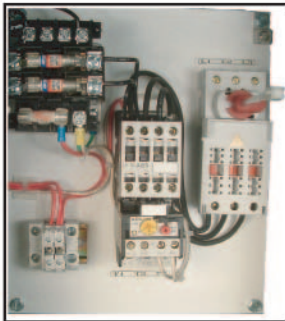


Fusible /Non Fusible Combination Controls

- A. UL/CSA Manual Motor Disconnect with door safety interlocks. Industrial Controls Disconnects are load make, load break, UL Listed for motor load switching duty.
- B. Fuse Blocks are type "J" as standard. For "R" Type, insert at end of part number "R" (same list price), for type cc 30 Amp fuse block - add "cc".
- C. Type XLSK Starter and overload relay complete with precision ambient compensated heaters and differential single phasing protection.

Fusible Disconnect Type Enclosed

Voltage	Design Rating Max HP UL	Fuse Block Amps	Catalog No. Type FC XLS-	(Metal) General Purpose NEMA1 -M01	(Non Metal) Dust tight Outdoor NEMA4X -4X	(Metal) Dust Tight Drip Tight NEMA 12/4 -M4	Non Fusible Omit Fuse Block Deduct NFCXLS
200/230	5	30	7K-1	\$ 510	\$ 620	\$ 620	\$ - 26
460	10	30	7K-2	\$ 510	\$ 620	\$ 620	\$ - 26
230	7 1/2	60	11K-1	\$ 545	\$ 690	\$ 690	\$ - 26
460	15	30	11K-2	\$ 545	\$ 690	\$ 690	\$ - 26
200	10	60	15K-1	\$ 700	\$ 790	\$ 790	\$ - 26
230	10	60	15K-2	\$ 700	\$ 790	\$ 790	\$ - 26
460	20	60	15K-3	\$ 700	\$ 790	\$ 790	\$ - 26
200/230	15	100	22K-1	\$ 890	\$ 1,040	\$ 1,040	\$ - 26
460	30	60	22K-2	\$ 890	\$ 1,040	\$ 1,040	\$ - 26
200/230	20/25	100	37K-1	\$ 1,170	\$ 1,430	\$ 1,430	\$ - 52
460	50	100	37K-2	\$ 1,170	\$ 1,430	\$ 1,430	\$ - 52
200/230	25/30	100	45K-1	\$ 1,390	\$ 1,650	\$ 1,650	\$ - 52
460	60	100	45K-2	\$ 1,390	\$ 1,650	\$ 1,650	\$ - 52
230	40	200	55K-1	\$ 2,150	\$ 2,660	\$ 2,660	\$ - 88
460	75	200	55K-2	\$ 2,150	\$ 2,660	\$ 2,660	\$ - 88
200/230	40/50	200	75K-1	\$ 2,630	\$ 3,280	\$ 3,280	\$ - 88
460	100	200	75K-2	\$ 2,630	\$ 3,280	\$ 3,280	\$ - 88
200/230	60/75	400	110K-1	\$ 4,680	\$ 5,200	\$ 5,200	\$ - 190
460	150	400	110K-2	\$ 4,680	\$ 5,200	\$ 5,200	\$ - 190
200/230	100	400	160K-1	\$ 5,600	\$ 7,050	\$ 7,050	\$ - 190
460	250	400	160K-2	\$ 5,600	\$ 7,050	\$ 7,050	\$ - 190
200/230	125/150	600	220K-1	\$ 9,260	\$ 11,510	\$ 11,510	\$ - 290
460	300	600	220K-2	\$ 9,260	\$ 11,510	\$ 11,510	\$ - 290
230	200	600	280K-1	Check With Factory			
460	400	600	280K-2				
230	250	600	375K-1				
460	500	600	375K-2				



Steps to Order Motor Starter:	
Step 1 - Size Choose from the UL HP and Voltage list per your application. For Example: 5 HP 230V 3 Phase Part# FC XL7K- 1*	
Step 2 - Coil * From the coil suffix chart on next page select the appropriate coil suffix For Example:120 VAC Coil = A Part # FC XLS7K-1A-	
Step 3 - Overload Amps** This step requires a suffix for your overload protection, refer to "OVERLOAD RELAY SUFFIX TABLE"Next Page. (Example : 5HP @ 230V 3 Phase , if 13 full load Amps= Suffix "N")	
Step 4 - Enclosure specify "open" or "enclosed" requirements. For Example if NEMA 12 Complete Part # FCXLS7K - 1A - N-M4	

For Factory Installed Additions
See Page#38, 39 Special Features
Include:
Transformers - Primary , secondary
Fusing included
Pilot Lights
HOA ,Start /Stop,on off selector switches,ect.
Time Delay Relays
Phase Loss , Reverse Phase, Voltage Monitors.