

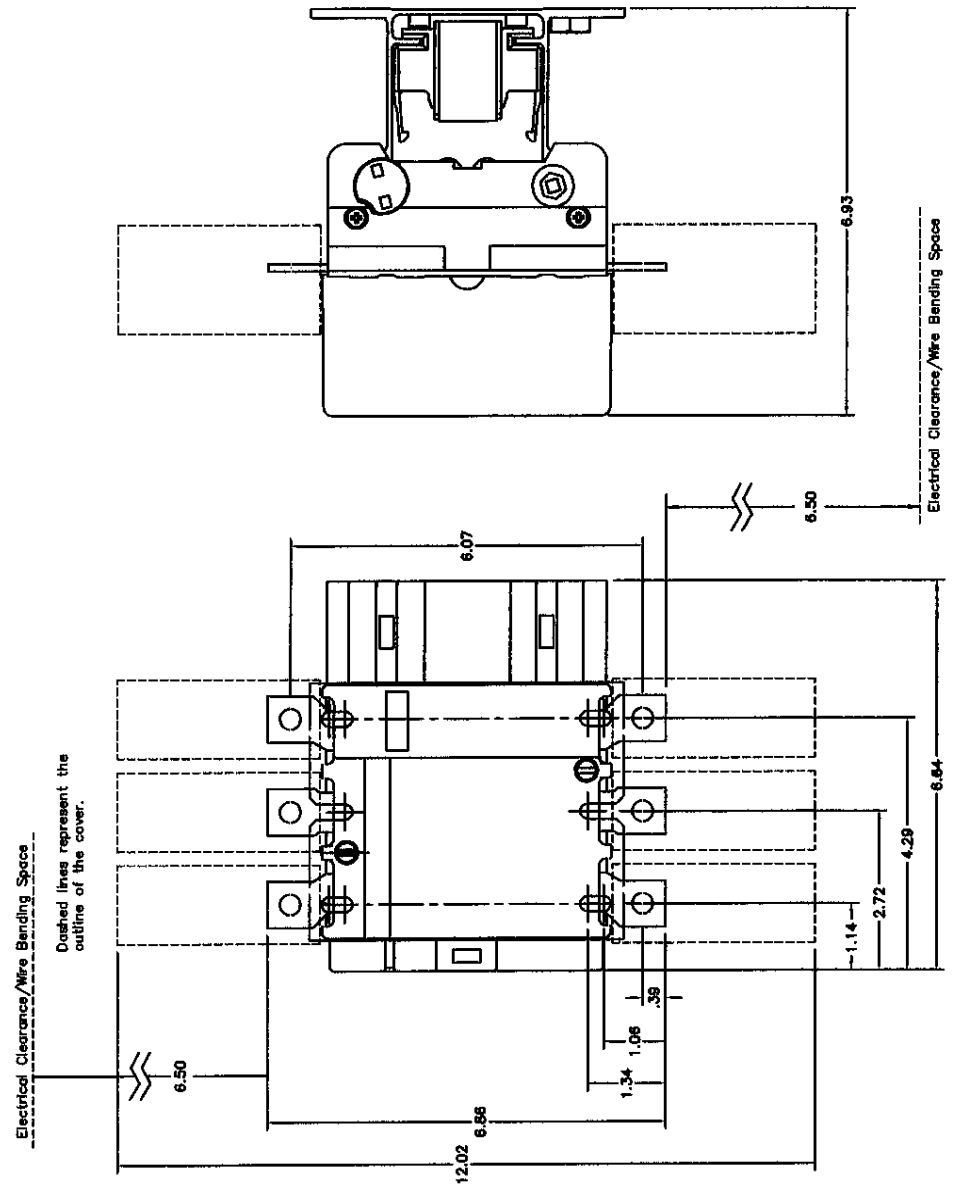
MAXIMUM HORSEPOWER RATINGS FOR 3 PHASE MOTORS

VOLTAGE (V)	200V	230V	480V	600V
HORSEPOWER	50	60	125	150
MAXIMUM CURRENT	INDUCTIVE (AC) --- 185A			
	RESISTIVE (AC) --- 275A			
AUXILIARY CONTACTS	1NG --- 1*			
BUILT-IN	1NG --- 0			

*THIS ONE NORMALLY OPEN HOLDING CIRCUIT CONTACT IS INCORPORATED IN THE DESIGN OF THE COIL.

COIL VOLTAGES FOR EEC 115 TO EEC 780

SUFFIX	VOLTAGE (VAC)	FREQUENCY (Hz)	DC VOLTAGE (VDC)
-A	120	50/60	
-C	208 - 230	60	
-E	480/400	60/50	
-F	600	60	-DCN = 24VDC
-D	380	50	-DCO = 48VDC
-G	24	50/60	-DCP = 120VDC
-H	277 - 280	60	-DCR = 220VDC



Electrical and Electronic Controls, Inc.
 3881 Juniper Rd
 Easton, PA 18042 USA
 (610)-278-2777 Fax: (610)-278-5444
 Email: info@eeccontrols.com
 www.eeccontrols.com

Dimension Drawing
 EEC185 AC/DC Operated

Drawing No. **EEC 185-AC_DC 0**

REV. 001/005

REV	DESCRIPTION	DATE	APPD	DRAWN	LR	DESCRIPTION
				CHECKED	TG	
				APPROVED		
				DATE	08/23/07	