

MAXIMUM POWER RATINGS FOR 1PH AND 3PH MOTORS

ECC 25	SINGLE PHASE		THREE PHASE			
	115V	230V	200V	230V	480V	600V
	2 HP	3 HP	5 HP	7.5 HP	15 HP	20 HP

AUXILIARY CONTACTS

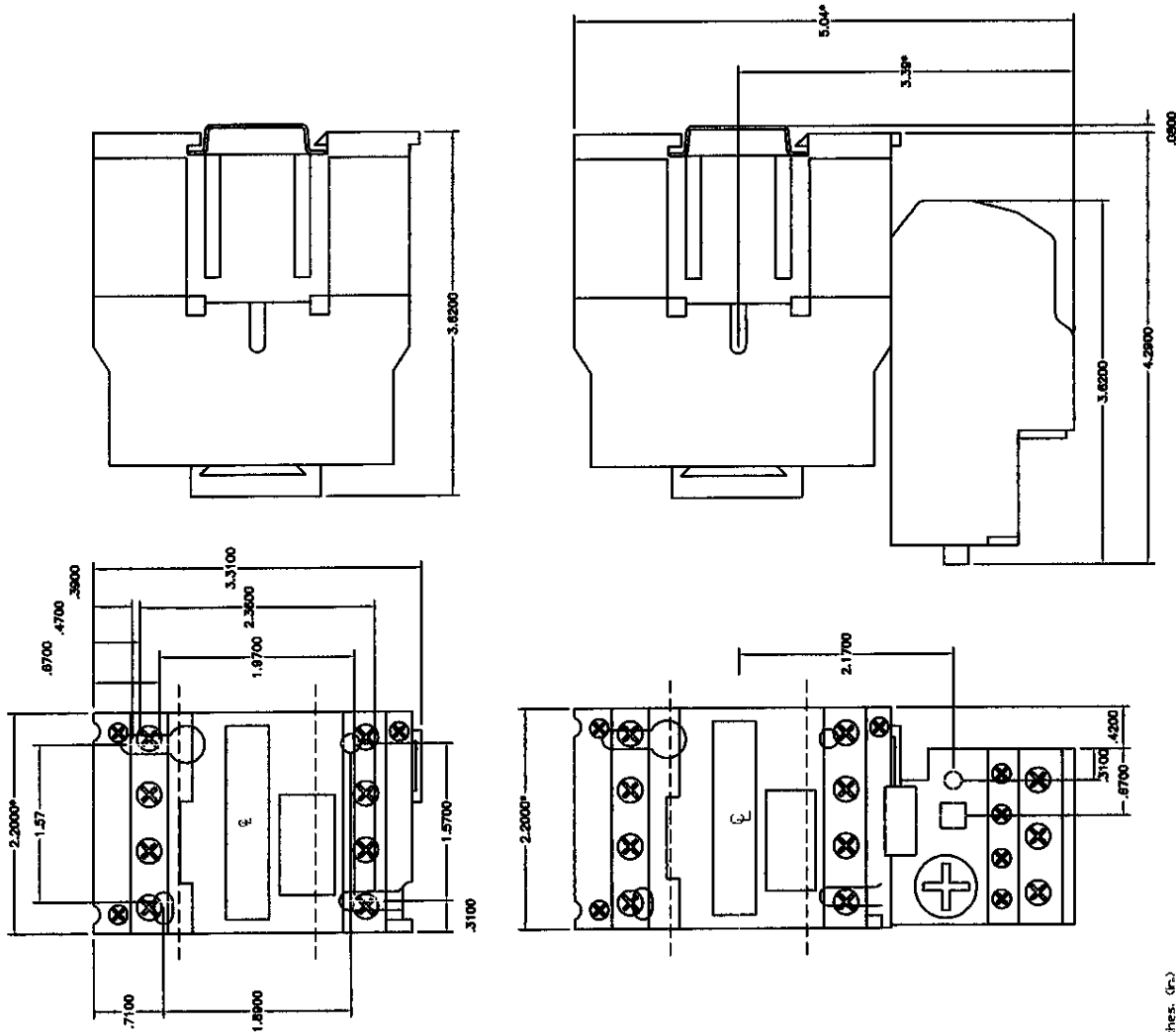
CODE (U)	NO	NC
10	1	-
01	-	1

COIL VOLTAGES FOR ECC 12 TO ECC 400

SUFFIX	VOLTAGE (V/AC)	FREQUENCY (HZ)	DC VOLTAGE (V/DC)
-A	120	50/60	
-C	208 - 230	60	
-E	480/480	60/50	-JICH = 12VDC
-F	600	60	-JICN = 24VDC
-B	360	50	-JICI = 48VDC
-G	24	50/60	-JICP = 120VDC
-H	277 - 280	60	-JICR = 220VDC
-J	220	50/60	

CLASS 10 OVERLOAD RELAYS

CURRENT SETTING RANGE (AMPS)	CATALOG NUMBER
10-15	ECC 10-15
15-25	ECC 15-25
25-40	ECC 25-40
40-63	ECC 40-63
63-1	ECC 63-1
1-1.6	ECC 1-1.6
1.6-2.5	ECC 1.6-2.5
2.5-4	ECC 2.5-4
4-6	ECC 4-6
6-8	ECC 6-8
7-10	ECC 7-10
9-13	ECC 9-13
12-18	ECC 12-18
17-25	ECC 17-25



Note: Dimension in inches. (In.)
 Add 0.49 for auxiliary contact side mounted

Electrical and Electronic Controls, Inc.
 3881 Bussard Road
 Bayside, NY 11369 USA
 (845) 278-5777 Fax (845) 278-5444
 Email: info@eeccontrols.com
 www.eeccontrols.com



Dimension Drawing
 TEC 25, ECC 25
 AC operated 3/4 pole

Drawing No.

ECC 25-AC

REV.

0

Description

DATE	APPD	DRAWN LR
		CHECKED TG
		APPROVED
		DATE 08/23/07

DESCRIPTION

REV