

MAXIMUM POWER RATINGS FOR 1PH AND 3PH MOTORS
50/60 HZ AC3 DUTY

| ECC 32 | SINGLE PHASE | | THREE PHASE | | | |
|--------|--------------|------|-------------|-------|-------|-------|
| | 115V | 230V | 200V | 230V | 480V | 600V |
| | 2 HP | 5 HP | 10 HP | 10 HP | 20 HP | 25 HP |

AUXILIARY CONTACTS

| CODE (1) | NO | NC |
|----------|----|----|
| 10 | 1 | - |
| 01 | - | 1 |

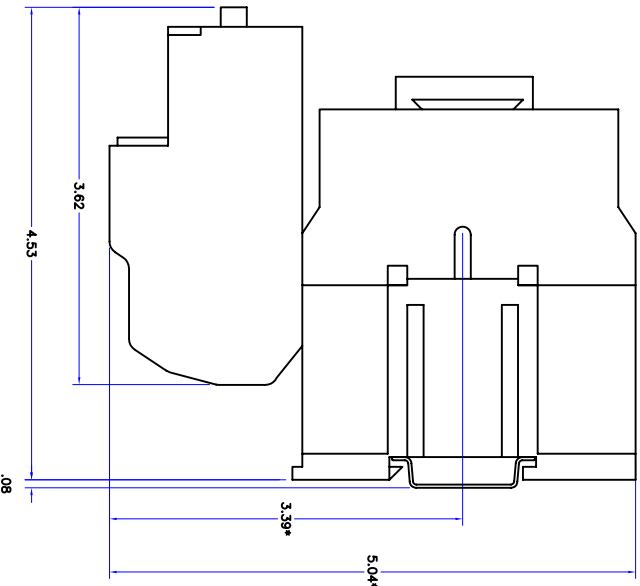
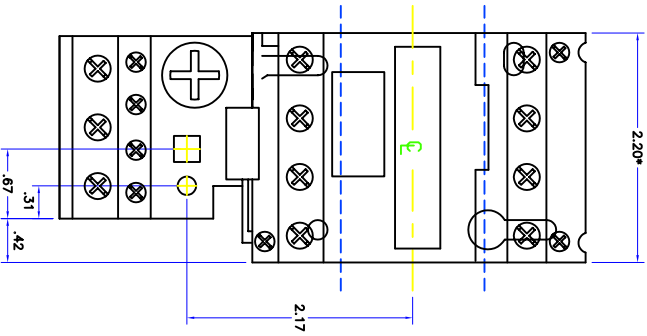
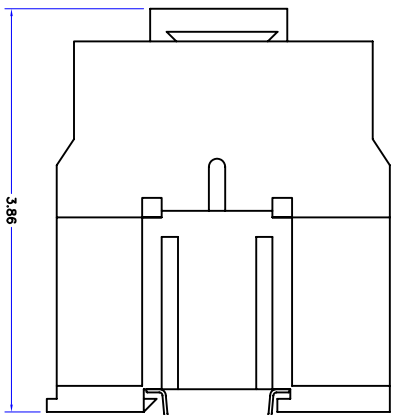
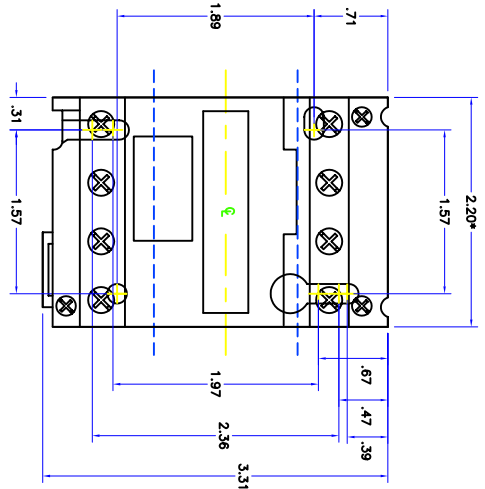
COIL VOLTAGES FOR ECC 12 TO ECC 400

| SUFFIX | VOLTAGE (VAC) | FREQUENCY (HZ) | DC VOLTAGE (VDC) |
|--------|---------------|----------------|------------------|
| -A | 120 | 50/60 | |
| -C | 208 - 230 | 60 | |
| -E | 480/400 | 60/50 | -DCM = 18VDC |
| -F | 600 | 60 | -DCM = 24VDC |
| -D | 380 | 50 | -DCM = 48VDC |
| -G | 24 | 50/60 | -DCP = 120VDC |
| -H | 277 - 280 | 60 | -DCR = 220VDC |
| -B | 220 | 50/60 | |

CLASS 10 OVERLOAD RELAYS

| CURRENT SETTING RANGE (AMPS) | CATALOG NUMBER |
|------------------------------|----------------|
| 10-16 | ECC 10-16 |
| 16-25 | ECC 16-25 |
| 25-40 | ECC 25-40 |
| 40-63 | ECC 40-63 |
| 63-1 | ECC 63-1 |
| 1-16 | ECC 1-16 |
| 16-25 | ECC 16-25 |
| 25-4 | ECC 25-4 |
| 4-6 | ECC 4-6 |
| 5.5-8 | ECC 5.5-8 |
| 7-10 | ECC 7-10 |
| 9-13 | ECC 9-13 |
| 12-18 | ECC 12-18 |
| 17-25 | ECC 17-25 |

Note: Dimension in inches. (in.)
* Add 0.49 for auxiliary contact side mounted



REV DESCRIPTION DATE APPID DRAWN LR CHECKED TG APPROVED DATE 08/23/07

Description

Dimension Drawing
TEC 32, ECC 32
AC operated 3 pole



Electrical and Electronic Controls, Inc.
3881 Jankbury Rd
Brea, CA 92615 USA
(949) 278-5177
Fax: (949) 278-5444
Email: fce@eeccontrols.com
www.eeccontrols.com

Drawing No.

ECC 32-AC

REV.

0