

# SERIES D DISCONNECT SWITCHES UL508

16 Amp - 250 Amp  
600Volt

Load Make/Load Break  
Positive Opening  
Compact Size  
Modular Construction  
Horse Power Rated  
Custom Versions

## Featuring:

- Auto Alignment Shaft
- Wide Handle Selection
  - Add-on Auxiliary
  - Add-on Power Poles
  - Add-on Neutral Bar
  - Add-on Neutral Pole
- Under Voltage Trip Option

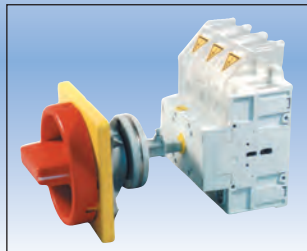
OTHER AVAILABLE ET PRODUCTS:  
CAM SWITCHES 25-1200 AMP



## SERIES D DISCONNECTS

Machine Safety Disconnect Option

FEATURING  
HANDLE-SHAFT  
SELF-ALIGNING SYSTEM






ELECTRICAL & ELECTRONIC  
CONTROLS, INC.  
3881 DANBURY ROAD  
BREWSTER, NY 10509  
845-278-5777 FAX 845-278-5444  
E-MAIL: [info@eecontrols.com](mailto:info@eecontrols.com)  
[www.eecontrols.com](http://www.eecontrols.com)



## BASE MOUNT WITH SAFETY DOOR INTERLOCK

8" Adjustable  
mounting depth  
as standard

### 3 POLE

							
		IP 65 Type 4 Rated 1 Padlock		IP 65 Type 4 Rated 3 Padlocks		Bypassable, IP 67 (4X) Rated 2 Padlocks, 22mm Mtg. Hole	
		WITH <b>BE</b> OPERATOR		WITH <b>D</b> OPERATOR		WITH <b>BY</b> OPERATOR	
UNIT SIZE	UL/CSA GENERAL PURPOSE (INDUCTIVE) AMPS	CATALOG NUMBER	LIST PRICE	CATALOG NUMBER	LIST PRICE	CATALOG NUMBER	LIST PRICE
<b>D05</b>	16	<b>E D05-3BE 1 SD-*</b>	\$105	<b>E D05-3D 3 SD-*</b>	\$112	<b>E D05-3BY 1 SD-*</b>	\$172
<b>D1</b>	25	<b>E D1-3BE 1 SD-*</b>	115	<b>E D1-3D 3 SD-*</b>	122	<b>E D1-3BY 1 SD-*</b>	182
<b>D2</b>	40	<b>E D2-3BE 3 SD-*</b>	140	<b>E D2-3D 3 SD-*</b>	147	<b>E D2-3BY 3 SD-*</b>	207
<b>D3</b>	63	<b>E D3-3BE 3 SD-*</b>	155	<b>E D3-3D 3 SD-*</b>	162	<b>E D3-3BY 3 SD-*</b>	222
<b>DK4</b>	80	<b>E DK4-3BE 4 SD-*</b>	250	<b>E DK4-3D 4 SD-*</b>	260	<b>E DK4-3BY 4 SD-*</b>	335
<b>D4</b>	100	<b>E D4-3BE 4 SD-*</b>	270	<b>E D4-3D 4 SD-*</b>	280	<b>E D4-3BY 4 SD-*</b>	355
<b>D5</b>	125	<b>E D5-3BE 4 SD-*</b>	300	<b>E D5-3D 4 SD-*</b>	310	<b>E D5-3BY 4 SD-*</b>	385
<b>D6</b>	200	—————		<b>E D6-3D 5 SD-*</b>	695	—————	
<b>D7</b>	250	—————		<b>E D7-3D 5 SD-*</b>	965	—————	

### 4 POLE

<b>D05</b>	16	<b>E D05-4BE 1 SD-*</b>	\$118	<b>E D05-4D 3 SD-*</b>	\$125	<b>E D05-4BY 1 SD-*</b>	\$185
<b>D1</b>	25	<b>E D1-4BE 1 SD-*</b>	128	<b>E D1-4D 3 SD-*</b>	135	<b>E D1-4BY 1 SD-*</b>	195
<b>D2</b>	40	<b>E D2-4BE 3 SD-*</b>	160	<b>E D2-4D 3 SD-*</b>	167	<b>E D2-4BY 3 SD-*</b>	227
<b>D3</b>	63	<b>E D3-4BE 3 SD-*</b>	175	<b>E D3-4D 3 SD-*</b>	182	<b>E D3-4BY 3 SD-*</b>	242
<b>DK4</b>	80	<b>E DK4-4BE 4 SD-*</b>	285	<b>E DK4-4D 4 SD-*</b>	295	<b>E DK4-4BY 4 SD-*</b>	370
<b>D4</b>	100	<b>E D4-4BE 4 SD-*</b>	305	<b>E D4-4D 4 SD-*</b>	315	<b>E D4-4BY 4 SD-*</b>	390
<b>D5</b>	125	<b>E D5-4BE 4 SD-*</b>	335	<b>E D5-4D 4 SD-*</b>	345	<b>E D5-4BY 4 SD-*</b>	420
<b>D6</b>	200	—————		<b>E D6-4D 5 SD-*</b>	860	—————	
<b>D7</b>	250	—————		<b>E D7-4D 5 SD-*</b>	1130	—————	

**8" DEPTH DIMENSION** is standard on units sized 16-250Amp with through the door safety interlock mechanism.

**\* SUFFIX:** Add -RG for Red-Yellow operator handle.  
Add -SS for Black handle "D" & "BY" type only.  
Add -SI for Black-Silver operator "BE" handle.

**6 Pole** Versions available. Contact Factory.

SHAFT EXTENSIONS			
Switch Size	Shaft Length *	Catalog Number	List Price
D05 - D3	200mm (7.87 in)	ED-SE-5	\$21
DK4 - D5	155mm (6.10 in)	ED-SE-7	22
D6, D7	134mm (5.27 in)	ED-SE-11	27



\* Field cut the shaft to length

### Base Mount (Mounts Inside Enclosure)

### Front Mount (External Operator)

## 3 POLE

		1 Padlock		3 Padlocks		IP 65 Type 4 Rated			
		1 Padlock		3 Padlocks		1 Padlock		3 Padlocks	
Unit Size	AMPS	WITH BE OPERATOR		WITH D OPERATOR		WITH BE OPERATOR		WITH D OPERATOR	
		CATALOG NUMBER	LIST PRICE	CATALOG NUMBER	LIST PRICE	CATALOG NUMBER	LIST PRICE	CATALOG NUMBER	LIST PRICE
D05	16	E D05-3BE 1 BM-*	\$75	E D05-3D 3 BM-*	\$82	E D05-3BE 1 FM-*	\$65	E D05-3D 3 FM-*	\$72
D1	25	E D1-3BE 1 BM-*	80	E D1-3D 3 BM-*	87	E D1-3BE 1 FM-*	70	E D1-3D 3 FM-*	77
D2	40	E D2-3BE 3 BM-*	123	E D2-3D 3 BM-*	130	E D2-3BE 3 FM-*	108	E D2-3D 3 FM-*	115
D3	63	E D3-3BE 3 BM-*	147	E D3-3D 3 BM-*	154	E D3-3BE 3 FM-*	132	E D3-3D 3 FM-*	139
DK4	80	E DK4-3BE 4 BM-*	190	E DK4-3D 4 BM-*	200	E DK4-3BE 4 FM-*	170	E DK4-3D 4 FM-*	180
D4	100	E D4-3BE 4 BM-*	218	E D4-3D 4 BM-*	228	E D4-3BE 4 FM-*	198	E D4-3D 4 FM-*	208
D5	125	E D5-3BE 4 BM-*	260	E D5-3D 4 BM-*	270	E D5-3BE 4 FM-*	240	E D5-3D 4 FM-*	250
D6	200	————		E D6-3D 5 BM-*	650	————		E D6-3D 5 FM-*	620
D7	250	————		E D7-3D 5 BM-*	905	————		E D7-3D 5 FM-*	875

## 4 POLE

D05	16	E D05-4BE 1 BM-*	\$88	E D05-4D 3 BM-*	\$95	E D05-4BE 1 FM-*	\$78	E D05-4D 3 FM-*	\$85
D1	25	E D1-4BE 1 BM-*	93	E D1-4D 3 BM-*	100	E D1-4BE 1 FM-*	83	E D1-4D 3 FM-*	90
D2	40	E D2-4BE 3 BM-*	143	E D2-4D 3 BM-*	150	E D2-4BE 3 FM-*	128	E D2-4D 3 FM-*	135
D3	63	E D3-4BE 3 BM-*	167	E D3-4D 3 BM-*	174	E D3-4BE 3 FM-*	152	E D3-4D 3 FM-*	159
DK4	80	E DK4-4BE 4 BM-*	225	E DK4-4D 4 BM-*	235	E DK4-4BE 4 FM-*	205	E DK4-4D 4 FM-*	215
D4	100	E D4-4BE 4 BM-*	253	E D4-4D 4 BM-*	263	E D4-4BE 4 FM-*	233	E D4-4D 4 FM-*	243
D5	125	E D5-4BE 4 BM-*	295	E D5-4D 4 BM-*	305	E D5-4BE 4 FM-*	275	E D5-4D 4 FM-*	285
D6	200	————		E D6-4D 5 BM-*	815	————		E D6-4D 5 FM-*	785
D7	250	————		E D7-4D 5 BM-*	1070	————		E D7-4D 5 FM-*	1040

\* SUFFIX: Add -RG for Red-Yellow operator handle.  
Add -SS for Black handle "D" type only.  
Add -SI for Black-Silver operator "BE" handle.

2 Pole (Size D1 Only)

Deduct \$10 from List Price

P/N Example:

Change 3 to 2: E D1-3BE (3 Pole)

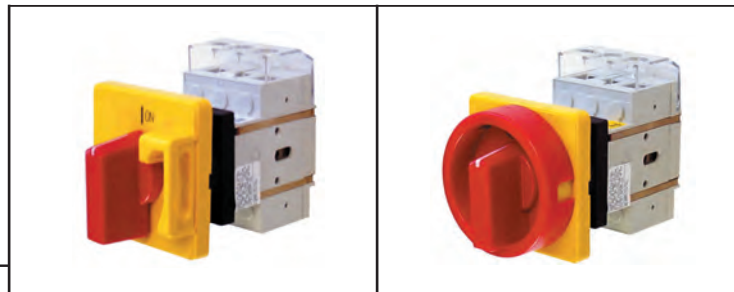
E D1-2BE (2 Pole)

### E D2-3D 3 BM-RG

Frame Size			Handle Color
# of Poles			Mounting Style
Handle Type			Face Plate Size

## SINGLE HOLE MOUNT

### 3 POLE

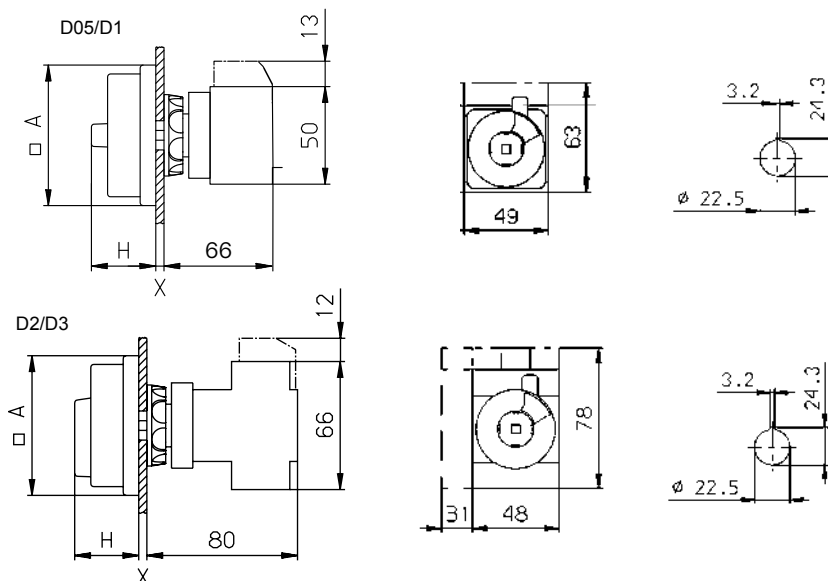


UNIT SIZE	UL/CSA GENERAL PURPOSE (INDUCTIVE) AMPS	WITH BE OPERATOR		WITH D OPERATOR	
		CATALOG NUMBER	LIST PRICE	CATALOG NUMBER	LIST PRICE
D05	16	E D05-3BE 1 SH-*	\$72	E D05-3D 2 SH-*	\$79
D1	25	E D1-3BE 1 SH-*	77	E D1-3D 2 SH-*	84
D2	40	E D2-3BE 2 SH-*	135	E D2-3D 2 SH-*	142
D3	63	E D3-3BE 2 SH-*	150	E D3-3D 2 SH-*	157

### 4 POLE

D05	16	E D05-4BE 1 SH-*	\$85	E D05-4D 2 SH-*	\$92
D1	25	E D1-4BE 1 SH-*	90	E D1-4D 2 SH-*	97
D2	40	E D2-4BE 2 SH-*	155	E D2-4D 2 SH-*	162
D3	63	E D3-4BE 2 SH-*	170	E D3-4D 2 SH-*	177

**\*SUFFIX:** Add -RG for Red-Yellow operator handle.  
Add -SS for Black handle "D" type only.  
Add -SI for Black-Silver operator "BE" handle.






Handle Type Size	BE		D		X <sub>max.</sub>
	A	H	A	H	
D05/D1	48	27	72	34	4
D2 / D3	72	34	72	34	4

Size	PE, N B1	1-AUX B1	2-AUX B1
D05/D1	-	-	-
D2 / D3	17	11	19





## 3 POLE

				IP 55 Non-Metal					
Unit Size	AMPS	V{r g'3'Gperquwtg		U6"Gperquwtg		Type 4/12 Enclosure		Type 4X Enclosure	
		CATALOG NUMBER	LIST PRICE	CATALOG NUMBER	LIST PRICE	CATALOG NUMBER	LIST PRICE	CATALOG NUMBER	LIST PRICE
D05	16	E D05-3BE-M1-*	\$135	E D05-3D-S4-*	\$178	E D05-3D-M12-*	\$200	E D05-3BY-4X-*	\$220
D1	25	E D1-3BE-M1-*	145	E D1-3D-S4-*	188	E D1-3D-M12-*	210	E D1-3BY-4X-*	230
D2	40	E D2-3BE-M1-*	205	E D2-3D-S4-*	264	E D2-3D-M12-*	275	E D2-3BY-4X-*	290
D3	63	E D3-3BE-M1-*	255	E D3-3D-S4-*	279	E D3-3D-M12-*	295	E D3-3BY-4X-*	340
DK4	80	E DK4-3BE-M1-*	320			E DK4-3D-M12-*	350	E DK4-3BY-4X-*	430
D4	100	E D4-3BE-M1-*	392			E D4-3D-M12-*	425	E D4-3BY-4X-*	488
D5	125	E D5-3BE-M1-*	466			E D5-3D-M12-*	486	E D5-3BY-4X-*	534
D6	200	E D6-3D-M1-*	925			E D6-3D-M12-*	990		
D7	250	E D7-3D-M1-*	1235			E D7-3D-M12-*	1400		

## 4 POLE

D05	16	E D05-4BE-M1-*	\$148	E D05-4D-S4-*	\$191	E D05-4D-M12-*	\$213	E D05-4BY-4X-*	\$233
D1	25	E D1-4BE-M1-*	158	E D1-4D-S4-*	201	E D1-4D-M12-*	223	E D1-4BY-4X-*	243
D2	40	E D2-4BE-M1-*	225	E D2-4D-S4-*	284	E D2-4D-M12-*	295	E D2-4BY-4X-*	310
D3	63	E D3-4BE-M1-*	275	E D3-4D-S4-*	299	E D3-4D-M12-*	315	E D3-4BY-4X-*	360
DK4	80	E DK4-4BE-M1-*	355			E DK4-4D-M12-*	385	E DK4-4BY-4X-*	465
D4	100	E D4-4BE-M1-*	427			E D4-4D-M12-*	460	E D4-4BY-4X-*	523
D5	125	E D5-4BE-M1-*	500			E D5-4D-M12-*	521	E D5-4BY-4X-*	569
D6	200	E D6-4D-M1-*	1090			E D6-4D-M12-*	1155		
D7	250	E D7-4D-M1-*	1400			E D7-4D-M12-*	1565		

\* SUFFIX: Add -RG for Red-Yellow operator handle.  
 Add -SS for Black handle "D" & "BY" type only.  
 Add -SI for Black-Silver operator "BE" handle.

### E D2-3D-M12-RG

Frame Size \_\_\_\_\_  
 # of Poles \_\_\_\_\_  
 Handle Type \_\_\_\_\_

Handle Color \_\_\_\_\_  
 Enclosure Type \_\_\_\_\_