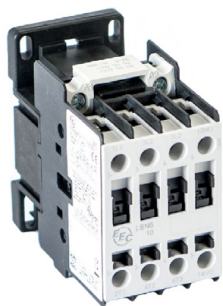


# RH5 POSITIVE GUIDED (20A) RELAY

RELAY - POSITIVE GUIDED DESIGN FOR  
SAFETY CIRCUITS PER IEC 60947-5-1

## Four-Pole Relay - 20 A (1<sup>th</sup>)



With Pressure Wire Screw Terminals				
Contacts		Part #	AC Operated List	DC Operated List
NO	NC			
2	2	RH5-22-◆	\$ 72	\$ 124
3	1	RH5-31-◆	\$ 72	\$ 124
4	0	RH5-40-◆	\$ 72	\$ 124
0	4	RH5-04-◆	\$ 72	\$ 124

### ◆ COIL VOLTAGE CODE

AC ◆	50/60 Hz	DC ◆	
-A	120V	-M	12VDC
-C	208/230V	-N	24VDC
-D	380V	-O	48VDC
-E	480V	-P	120VDC
-G	24V	-R	220VDC
-H	277V		
-F	600V		

To Complete the Part #, Replace "◆" with the  
Appropriate Coil Voltage Code



## Accessories:

### Auxiliary Contact Blocks 10A

#### Top Mounted <sup>1)</sup>

Normally Open	Normally Closed	Part #	List
0	1	HBXT01	\$ 14

Max 4 Aux contacts per RH5 unit.

#### Side Mounted <sup>1)</sup>

Normally Open	Normally Closed	Part #	List
1	1	HBXS11	\$ 26

Max 2 Aux contacts per RH5 unit.

Note 1)

- 10A rated
- Meets positive guided safety circuit standards 60947-5-1, and 60947-4-1

Replacement Coils	Description	Part Number	List
	AC Coil	LNC2- ◆	\$ 28
	DC Coil	LNC2- ◆	\$ 00

◆ Replace with Coil Voltage Suffix From Below Chart

AC ◆	50/60 Hz	DC ◆	
-A	120V	-M	12VDC
-C	208/230V	-N	24VDC
-D	380V	-O	48VDC
-E	480V	-P	120VDC
-G	24V	-R	220VDC
-H	277V		
-F	600V		

## Dimensions:

